

black+blum

L O N D O N



2025 CATALOGUE

ABOUT US

Founded over 20 years ago by Dan Black and Martin Blum, Black+Blum is a UK-based eco-design company, specialising in high-quality and durable food containers, drinkware and accessories. Innovative and sustainable design principles guide our brand, the entire range is thoughtfully developed and built to last.

Winning over 25 design awards globally, our products are sold in over 60 countries with warehouse centres in the UK, EU and USA.

DURABLE DESIGN

Every product has been uniquely designed in our studio in London. Each detail carefully considered for repeated lifelong use, and every material sourced to the highest standard for durability.

From concept to final product, we conduct rigorous research and development to ensure everything we create has a place in the world, meets a real need, and will last a lifetime.

PROUD MEMBERS OF:



“We create products that people love to use, and are proud to own.”

Dan Black

HELP US FIGHT FOOD WASTE

Food waste is responsible for 8-10% of all greenhouse gas emissions.

As part of our commitment to the environment we are on a mission to help fight food waste. We have partnered with the charity City Harvest, that rescues surplus food and redistributes it to food banks and community groups.



1% for the Planet represents a global network of businesses, individuals and Environmental Partners tackling our planet's most pressing environmental issues.



City Harvest rescues surplus food and redistributes it to food banks, schools and community groups.

FOR EVERY £1,000 YOU SPEND, YOU WILL:

FUND



40 meals

For those in need

SAVE



17kg

Of food from the landfill

PREVENT



43kg

Of GHG emissions



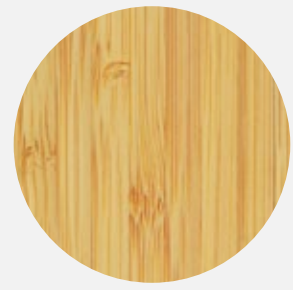
OUR MATERIALS

Our materials are chosen with great care - we consider how they are required to function, their durability, and their impact on the environment. We choose natural materials where possible, but our biggest aim is to create products which are made to last.



STAINLESS STEEL

We only use industrial strength 304-18/8 steel in our products for its long-lasting reliability and excellent resistance to corrosion and rust. It is also completely recyclable.



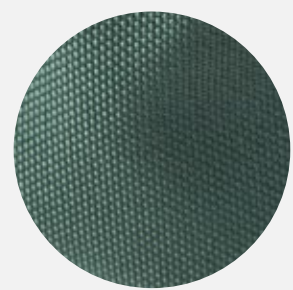
BAMBOO

Naturally anti-fungal and antibacterial, bamboo is great to use as a lid/chopping board. It's fast growing and quickly regenerates, minimising environmental impact.



CHARCOAL

We use active charcoal as a natural, plastic-free water filter. We only farm from local renewable forests, preserving the roots to promote re-growth and protect soil biodiversity.



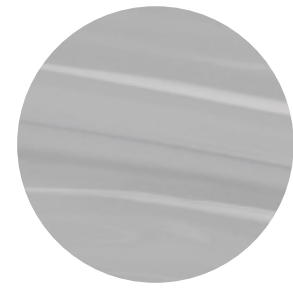
RECYCLED PET

Tough, hard-wearing, water-repellent and easy to wipe clean, this material is used in our soft goods is made from recycled plastic bottles and other single-use containers.



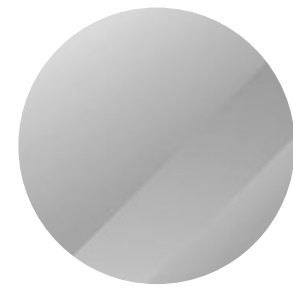
CORK

Renewable, biodegradable and 100% natural, cork has been used for centuries across many industries. It's also water-repellent, so ideal as the lid material in some of our bottles and thermoses.



PLASTIC

Sometimes certain plastics are the best material for the job. BPA/BFS-free, we only use high-quality plastics, sparingly and responsibly. All our plastics are 100% recyclable.



GLASS

The glass used in some of our products is Borosilicate - it is lightweight, strong and chemical resistant, taste-neutral, lead and BPA-free. It will age extremely well and last a lifetime.



OUR PACKAGING

All our product packaging is made from unbleached and uncoated kraft cardboard, making it 100% recyclable (it can even be added to home compost). Our packaging ensures all our designs are fully protected in transit and reach the end customer in perfect condition, yet are also beautifully presented with a natural and earthy look. This way, every product can either be a self-purchase or a gift.

CLOSED GIFT BOXES

Our higher value products tend to be packaged in full boxes as this makes them easier to gift and transport.

GIFT BOXES WITH WINDOWS

Based on customer research, we understand that sometimes our audience like to have a peak at what's inside, whether it's the colour or materials used.

SWING TAGS + SLEEVES

Our more minimal and basic ranges have swing tags or sleeves to reflect the retail environment or user requirements. We also do not box products unnecessarily as this is wasteful, for example our soft goods range.



OUR PRODUCTS | FOOD CONTAINERS



STEEL LUNCH BOXES

- 10 Stainless Steel Lunch Boxes
- 12 Bento Box
- 14 Sandwich Boxes



MULTI-FUNCTION

- 17 **NEW** - Square Multi-Function
- 19 Multi-Function Boxes
- 20 **NEW** - Multi-Function Sets
- 22 Multi-Function Bowls



ORIGINALS

- 24 Lunch Box Original
- 26 Lunch Pot Original



GLASS

- 28 Glass Lunch Bowl
- 29 Glass Lunch Pots



THERMOSES

- 31 Thermo Pot
- 33 Food Flask

DRINKWARE



STEEL WATER BOTTLES

- 36 Insulated Water Bottles
- 38 Steel Bottle
- 40 Explorer Bottles



EXPLORER FLASK DUO

- 42 **NEW** - Explorer Flask Duo



GLASS WATER BOTTLES

- 44 Glass Water Bottle



TUMBLER

- 46 Insulated Travel Tumbler



TRAVEL CUPS

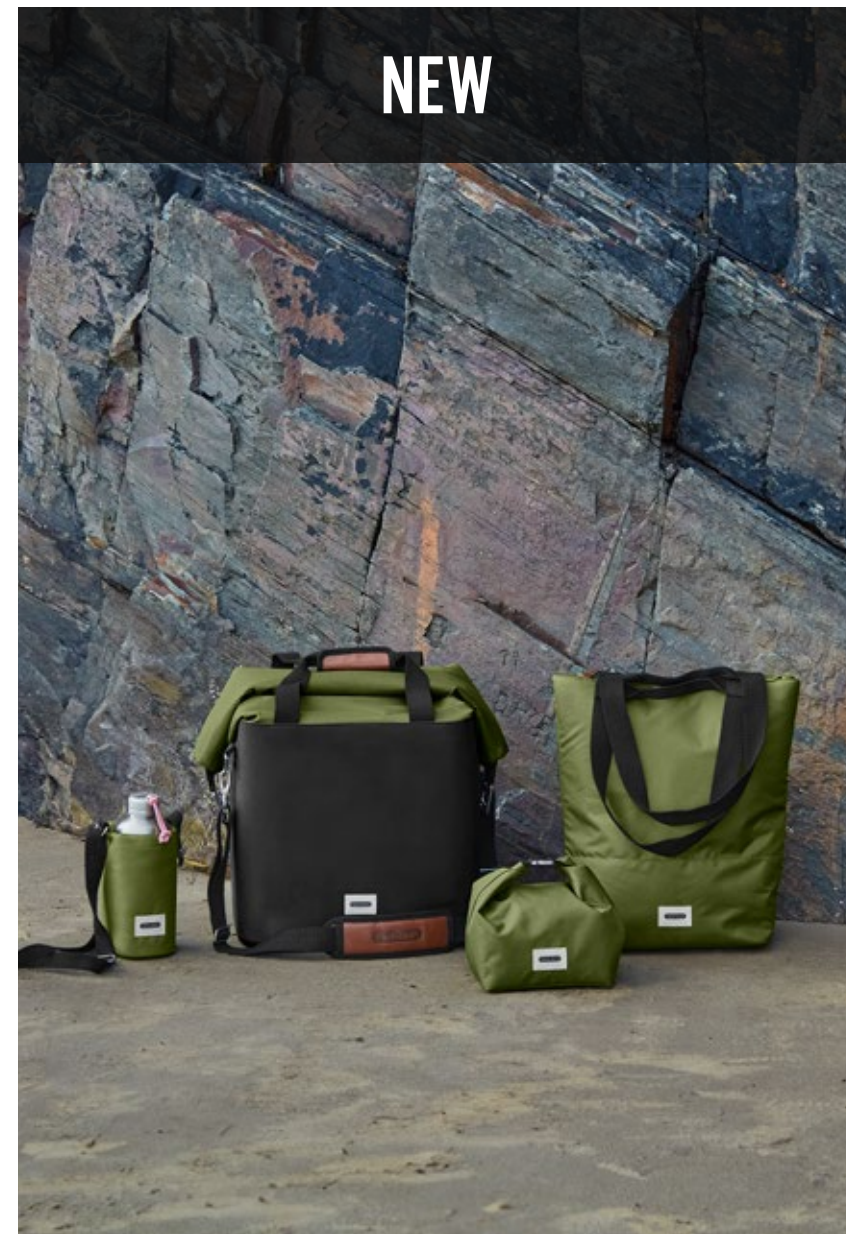
- 48 Insulated Travel Cup
- 50 Glass Travel Cup

OUTDOOR DINING



STEEL DINING RANGE

- 53 **NEW** - Stainless Steel Plate Set
- 55 **NEW** - Stainless Steel Cup Set
- 57 **NEW** - Stainless Steel Spork Set



BAGS + COOLERS

- 60 **NEW** - Insulated Bottle Bag
- 62 **NEW** - Insulated Cooler Bag
- 64 **NEW** - Insulated Lunch Bag
- 66 **NEW** - Insulated Tote Bag

FILTRATION



CHARCOAL FILTERS + VESSELS

- 70 Active Charcoal Filters
- 72 Bulk Charcoal Pieces
- 73 Charcoal Water Filter & Coil
- 75 Eau Good Glass
- 77 Carafes

ACCESSORIES



CUTLERY + RECIPE BOOK

- 80 Cutlery Set + CDU
- 82 Recipe Book

FOOD CONTAINERS

Our award-winning food containers make the perfect companion for the park, the office and the trail. Choose from high-quality stainless steel, lightweight glass or durable plastic, they come with and without cutlery and removable dividers to separate your snacks. We also have a range of vacuum insulated thermoses to keep your food or drinks hot or cold for hours. This entire collection is thoughtfully designed, reliable, and built to last.



STAINLESS STEEL LUNCH BOXES

The ultimate product for outdoor adventurers and busy commuters, this design is incredibly sturdy and a favourite among those living plastic-free and zero-waste. Taking inspiration from the timeless design of army mess tins, it's been engineered to include a vacuum sealed valve and lid, making it airtight and 100% leak proof.



SEALED + SECURE

The vacuum sealed silicone lid valve keeps it securely closed, 100% leak proof and airtight



TOUGH + DURABLE

Built to withstand drops and dents, this steel lunch box won't buckle under pressure



OVEN + FREEZER SAFE

So you can warm up your food or freeze leftovers



FORK INCLUDED

Seamlessly integrated within the silicone band, the stainless steel fork makes it quick and easy to stop for lunch



RECYCLABLE MATERIALS

BPA-free, 304/18-8 stainless steel, silicone

STAINLESS STEEL LUNCH BOX LARGE

WATCH VIDEO



NEW - Black
BAM-SS-L018



Ocean
BAM-SS-L005



Orange
BAM-SS-L003



Olive
BAM-SS-L010



Adjustable + removable
food divider included



SIZE	VOLUME + WEIGHT
L20 x W14 x H6 cm L7.8 x W5.5 x H2.3 in	1 L 34 fl oz 460 g 16.2 oz

STAINLESS STEEL LUNCH BOX

WATCH VIDEO



Olive
BAM-SS-S010



Vacuum sealed
valve



SIZE	VOLUME + WEIGHT
L17.5 x W13 x H5 cm L7 x W5.1 x H2 in	600ml 20 fl oz 330 g 11.6 oz



1L
34oz



600ml
20oz



STAINLESS STEEL BENTO BOX

Designed in collaboration with bento expert Sara Kiyo Popowa, it is one of the first fully leak proof steel bentos on the market. It includes two identical boxes which stack neatly atop each other, and a stainless steel fork. Breakfast and lunch, lunch and snacks, it's big enough to keep you going for the whole day.

WATCH VIDEO 



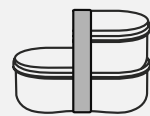
SEALED + SECURE

The vacuum sealed silicone lid valve keeps it securely closed, 100% leak proof and airtight



FORK INCLUDED

Hygienically stowed underneath the lid, the stainless steel fork makes lunch easy when you're on-the-go



TAKE ONE BOX OR TWO

The beauty of this design is that it can be used as a set or individually, the strap fits around both



BAMBOO LID

Naturally antibacterial and anti-fungal, it doubles as a chopping board or extra serving plate



RECYCLABLE MATERIALS

BPA-free, 304/18-8 stainless steel, polypropylene, silicone, nylon, natural bamboo

MADE IN A COLLABORATION WITH



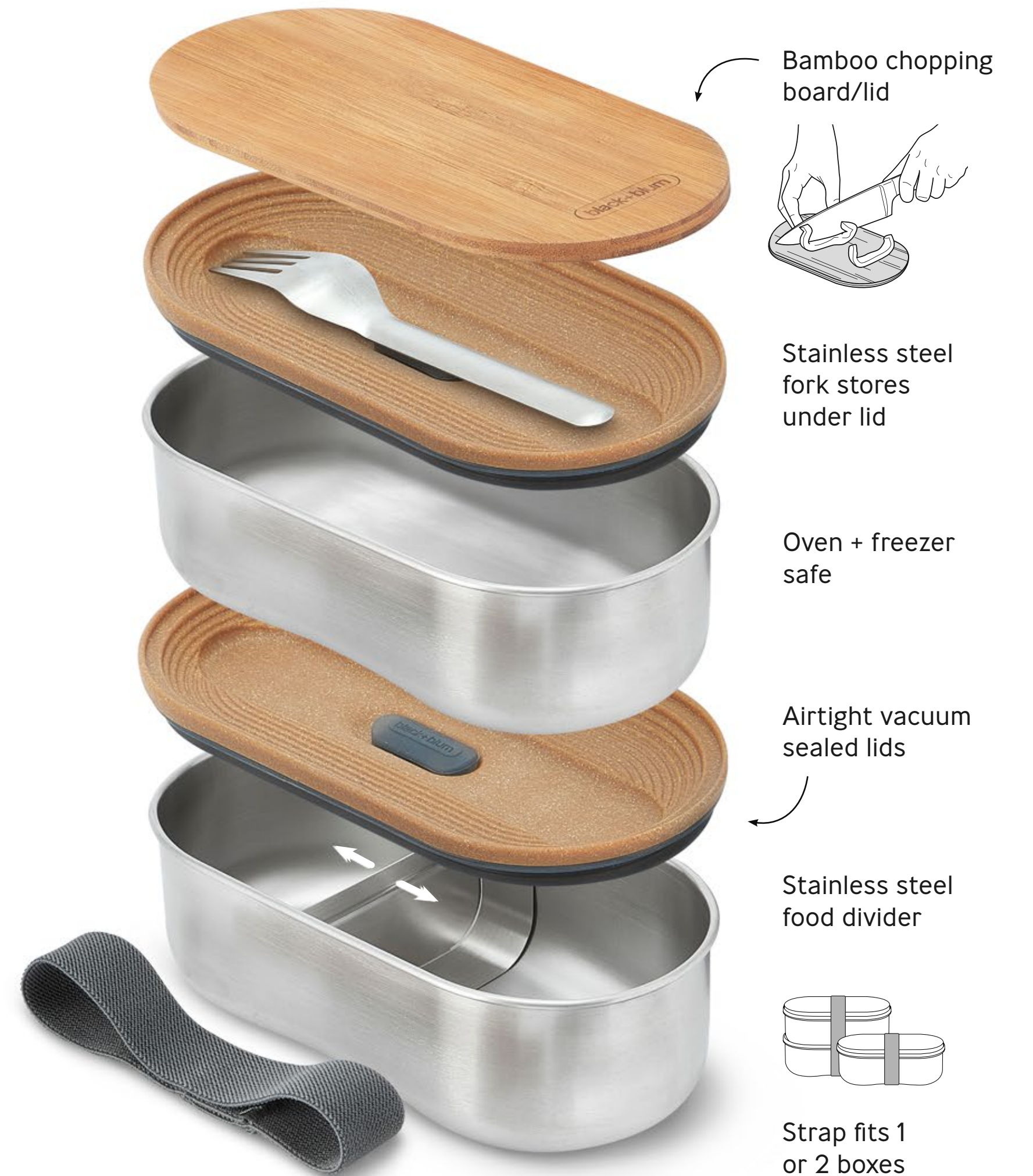
Sara Kiyo Popowa

Sara Kiyo Popowa of Shiso Delicious



BAM-BT-L016

SIZE	VOLUME + WEIGHT
L18.5 x W9.7 x H12.5cm L7.3 x W3.8 x H4.9 in	2 x 500 ml 2 x 17fl oz 510 g 18 oz





'The way we eat has the power to change the future.' Designing a bento box with Black+Blum has been a dream project. I hope you will enjoy using it. Sara x

@shisodelicious

SANDWICH BOXES

Made from high-quality stainless steel, the Sandwich Box range is perfect for dry goods like sandwiches, baked treats and snacks. The naturally antibacterial bamboo lid doubles as a chopping board or serving platter, perfect for picnics. They are tough, versatile and completely airtight.

SAFE + SECURE



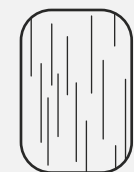
The silicone seal combined with the strap holds the bamboo lid securely in place, plus is airtight, keeping food fresher for longer

TOUGH + DURABLE



Built to withstand drops and dents, this steel lunch box won't buckle under pressure

BAMBOO LID



Naturally antibacterial and anti-fungal, it doubles as a chopping board or extra serving plate

RECYCLABLE MATERIALS



BPA-free, 304/18-8 stainless steel, natural bamboo, silicone

SANDWICH BOX LARGE

WATCH VIDEO



Olive
BAM-SB-L010



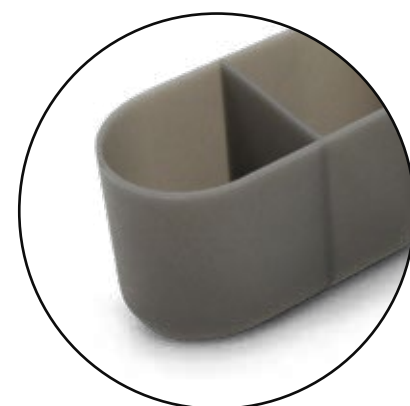
Ocean
BAM-SB-L005



Orange
BAM-SB-L003



Removable silicone compartment included



SIZE	VOLUME + WEIGHT
L19 x W13.5 x H7.5 cm L7.5 x W5.3 x H3 in	1.25 L 42 fl oz 430 g 15.1 oz

SANDWICH BOX

WATCH VIDEO



Olive
BAM-SB010



Natural bamboo lid to prep + serve



SIZE	VOLUME + WEIGHT
L22 x W14.5 x H5 cm L8.7 x W5.7 x H2 in	900 ml 30 fl oz 390 g 13.7 oz



900ml
30oz



1.25L
42oz



MULTI-FUNCTION

Made from innovative microwave-safe steel, the Multi-Function boxes and bowls are our newest and most versatile range. Also dishwasher, oven (base only) and freezer-safe, they're perfect for the growing trend of meal prepping, zero-waste refill food storage, and eating on-the-go.

Available in 3 shapes and seven sizes, you can choose how you want to use the Multi-Function range. Different meal types, portion sizes, or simply for the whole family, this range was designed with multi-purchase in mind, increasing average order value and re-purchase opportunities.

[READ MORE ABOUT MICROWAVE-SAFE STEEL](#)



SQUARE MULTI-FUNCTION BOXES

Now available in a new square shape, these 1.4L and 1.1L multi-function boxes are tough yet lightweight, making it easy to carry everything you need for the day. They are 100% leak-proof and airtight, keeping food fresher for longer. The semi-transparent lid ensures you don't forget what's inside, helping to reduce food waste.

NEW



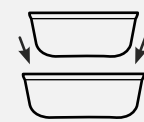
SEALED + SECURE

The vacuum sealed lid lock valve keeps it securely closed, 100% leak proof and airtight



LIGHTWEIGHT + DURABLE

The single-walled stainless steel is thin but tough, which means it's lighter and easy to transport, but also won't buckle under pressure



COMPACT STORAGE

Both the boxes and their lids have been designed with neat storage in mind. Different sizes will nest, same sizes will stack



VERSATILE

Made with innovative microwave-safe steel, it's also dishwasher, freezer and oven-safe. Ready to be used exactly how you need them



HYGIENIC + EASY CLEAN

It's super easy to keep this range clean, the lid seals are fully removable and have been designed with no hidden nooks



RECYCLABLE MATERIALS

BPA-free, 304/18-8 stainless steel, polypropylene, silicone



1.4L
47oz

Made from innovative microwave-safe steel



1.1L
37oz

Stacks + Nests

FBSS-SQ-L017-EN

1.4 L - 47 oz SIZE	WEIGHT
L19 x W19 x H7.7 cm L7.5 x W7.5 x H3 in	325 g 11.46 oz

FBSS-SQ-S017-EN

1.1 L - 37 oz SIZE	WEIGHT
L19 x W19 x H5.5 cm L7.5 x W7.5 x H2.2 in	312 g 11 oz

1.4L
47oz



1.1L
37oz

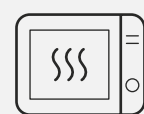


MULTI-FUNCTION BOXES

Available in three sizes, the Multi-Function boxes are tough but lightweight, making it easy to carry all you need for the day. They're 100% leak proof and airtight, keeping food fresher for longer and have a semi-transparent lid, so you don't forget what's in there and can reduce food waste.

WATCH VIDEO 

MICROWAVE-SAFE STEEL



We've worked closely with manufacturers to develop this innovative and versatile range. It's also dishwasher, oven (base only), freezer-safe.

SEALED + SECURE



The vacuum sealed lid lock valve keeps it securely closed, 100% leak proof and airtight

LIGHTWEIGHT + DURABLE



The single-walled stainless steel is thin but tough, which means it's lighter and easy to transport, but also won't buckle under pressure

COMPACT STORAGE



Both the boxes and their lids have been designed with neat storage in mind. Different sizes will nest, same sizes will stack

HYGIENIC + EASY CLEAN



It's super easy to keep this range clean, the lid seals are fully removable and have been designed with no hidden nooks

RECYCLABLE MATERIALS



BPA-free, 304/18-8 stainless steel, polypropylene, silicone



FBSS-BX-S017-EN

600 ml - 20 oz SIZE	WEIGHT
L17.5 x W12.6 x H6.5 cm L6.8 x W4.9 x H2.5 in	240 g 8.4 oz

FBSS-BX-M017-EN

900 ml - 30 oz SIZE	WEIGHT
L19 x W14.6 x H7.3 cm L7.5 x W5.7 x H2.9 in	270 g 9.5 oz

FBSS-BX-L017-EN

1.2 L - 40 oz SIZE	WEIGHT
L20 x W16.2 x H7.9 cm L7.9 x W6.4 x H3.1 in	320 g 11.3 oz

MULTI-FUNCTION BOX SETS

Now available in three sets:

- + Mixed size 1 x 600ml, 1 x 900ml and 1 x 1.2L
- + Same size 3 x 900ml
- + Same size 3 x 600ml

They're 100% leak proof and airtight, keeping food fresher for longer and have a semi-transparent lid, so you don't forget what's inside.



MICROWAVE-SAFE STEEL

We've worked closely with manufacturers to develop this innovative and versatile range. It's also dishwasher, oven (base only), freezer-safe.



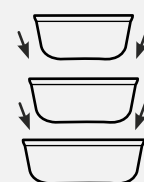
SEALED + SECURE

The vacuum sealed lid lock valve keeps it securely closed, 100% leak proof and airtight



LIGHTWEIGHT + DURABLE

The single-walled stainless steel is thin but tough, which means it's lighter and easy to transport, but also won't buckle under pressure



COMPACT STORAGE

Both the boxes and their lids have been designed with neat storage in mind. Different sizes will nest, same sizes will stack



HYGIENIC + EASY CLEAN

It's super easy to keep this range clean, the lid seals are fully removable and have been designed with no hidden nooks



RECYCLABLE MATERIALS

BPA-free, 304/18-8 stainless steel, polypropylene, silicone

NEW



FBSS-BX-PACK1

MIXED SIZE 1 X 600ml, 1 X 900ml, 1 X 1.2L



FBSS-BX-PACK2

SAME SIZE 3 X 900ml



FBSS-BX-PACK3

SAME SIZE 3 X 600ml



600ml
20oz

900ml
30oz

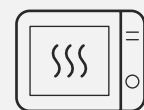
1.2L
40oz

MULTI-FUNCTION BOWLS

Exactly the same features as our Multi-Function boxes, the range also comes in bowls to suit those who prefer it. Just as tough, just as durable and just as lightweight.

WATCH VIDEO 

MICROWAVE-SAFE STEEL



We've worked closely with manufacturers to develop this innovative and versatile range. It's also dishwasher, oven (base only), freezer-safe.

SEALED + SECURE



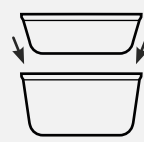
The vacuum sealed lid lock valve keeps it securely closed, 100% leak proof and airtight

LIGHTWEIGHT + DURABLE



The single-walled stainless steel is thin but tough, which means it's lighter and easy to transport, but also won't buckle under pressure

COMPACT STORAGE



Both the bowls and their lids have been designed with neat storage in mind. Different sizes will nest, same sizes will stack

HYGIENIC + EASY CLEAN



It's super easy to keep this range clean, the lid seals are fully removable and have been designed with no hidden nooks

RECYCLABLE MATERIALS



BPA-free, 304/18-8 stainless steel, polypropylene, silicone



Stacks + Nests



950ml
33oz

Vacuum seal lid lock



close
open



650ml
23oz

Made from innovative microwave-safe steel

FBSS-BL-S017-EN

650 ml - 23 oz SIZE	WEIGHT
L17 x W17 x H6 cm L6.7 x W6.7 x H2.3 in	245 g 8.6 oz

FBSS-BL-L017-EN

950 ml - 33 oz SIZE	WEIGHT
L17 x W17 x H8.2 cm L6.7 x W6.7 x H3.2 in	270 g 9.5 oz



950ml
33oz

650ml
23oz

LUNCH BOX ORIGINAL

Made from high-quality BPA/BPS-free durable plastic, the Lunch Box Original includes a stainless steel fork and two removable compartments for extra snacks and dressings. 100% leak proof and incredibly versatile, this is our best-selling lunch box.

WATCH VIDEO 



SEALED + SECURE

Silicone seals plus sturdy clips lock the lid into place - it's 100% leak proof and airtight



REMOVABLE COMPARTMENTS

Take the lot or none at all, this lunch box is fully customisable for what you need



VERSATILE

Microwave, dishwasher and freezer-safe, the Lunch Box Original can be used however you like



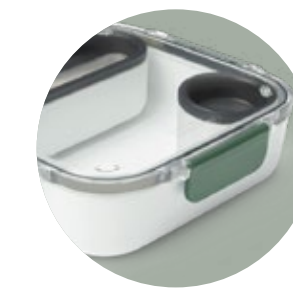
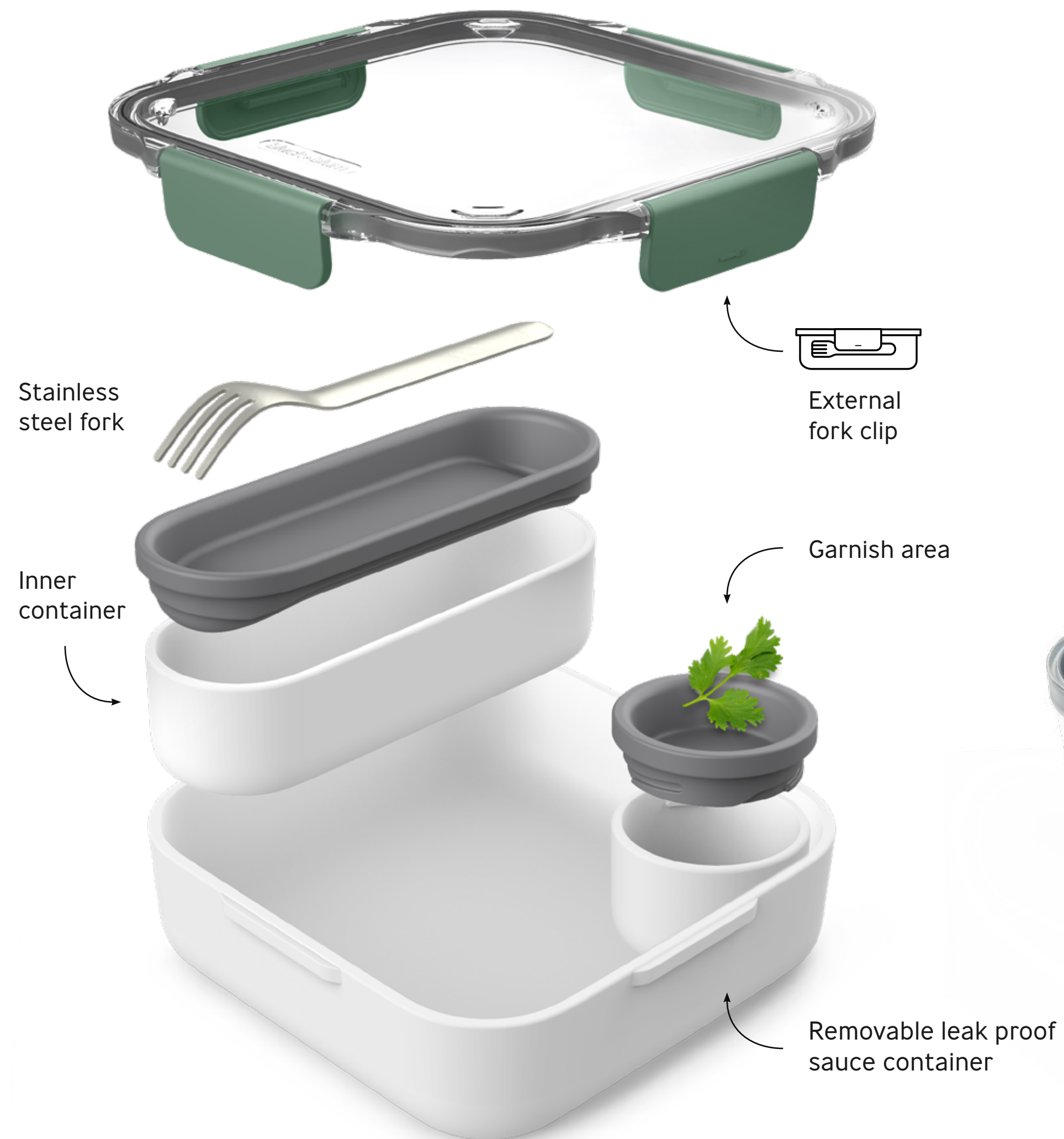
FORK INCLUDED

Stored either under the lid or clipped to the side of the box, the stainless steel fork means stopping for lunch is quick and easy



RECYCLABLE MATERIALS

BPA-free, Polypropylene, Tritan™, 304/18-8 stainless steel, silicone



Olive
BAO-BA010



Ocean
BAO-BA005



SIZE	VOLUME + WEIGHT
L20 x W20 x H5.5 cm L7.9 x W7.9 x H2.2 in	1 L 34 fl oz 510 g 18 oz



LUNCH POT ORIGINAL

The Lunch Pot Original includes two leak proof containers that can be locked together for easy carrying. This taller lunch box design works especially well in backpacks and tote bags, and the silicone strap holds the fully integrated stainless steel “spork” (spoon and fork) so you can easily find it at lunchtime.

WATCH VIDEO 

SEALED + SECURE



The screw top lid with silicone seals locks the lid into place - it's 100% leak proof and airtight

COMPACT STORAGE



Once finished, the smaller pot fits inside the larger, saving on space in your bag

CUTLERY INCLUDED



Held securely in place by the silicone strap, the stainless steel spork (spoon and fork) works for both salads and stews

SEPARATE COMPARTMENTS

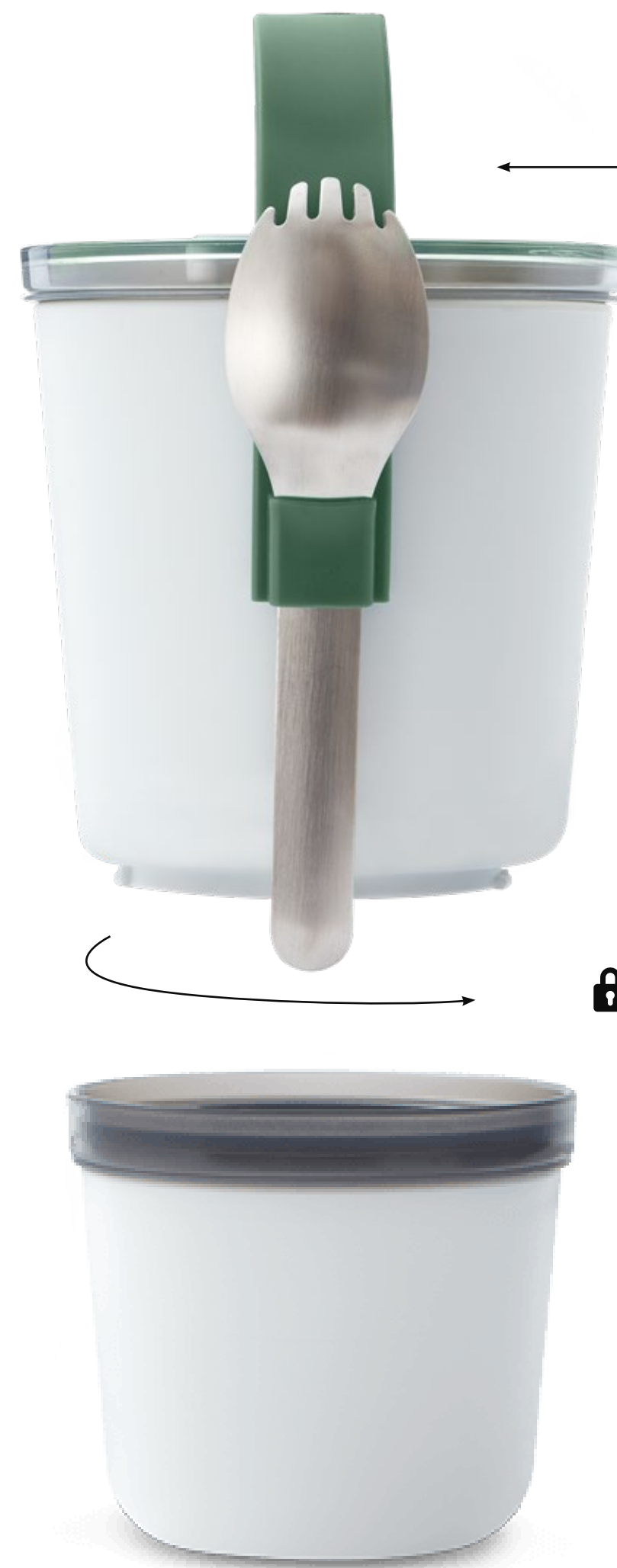


Makes it easy to bring breakfast and lunch, or lunch and snacks

RECYCLABLE MATERIALS



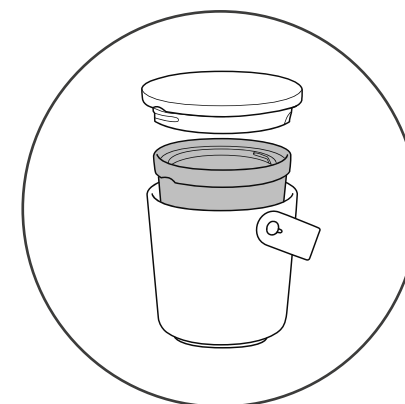
Polypropylene, Tritan™, 304/18-8 stainless steel, silicone



Handle makes it easy to retrieve from your bag

Microwave, dishwasher and freezer-safe

Two leak proof pots twist 'lock' together



Nests for compact storage after use



Olive
BAO-BP010



Ocean
BAO-BP005

SIZE	VOLUME + WEIGHT
D12 x H19.5 cm D4.7 x H7.7 in	300 + 600 ml 10 + 20 fl oz 370 g 13 oz

300ml
10oz

600ml
20oz

GLASS LUNCH COLLECTION

This 100% leak proof and lightweight range is available in three sizes and two colours. It is thoughtfully designed; appealing to glass lunch box lovers without the weight and bulkiness usually associated, and with added protection. Ideal for hot and cold food, the collection is great for both the midweek lunch and Saturday picnic.

[WATCH VIDEO](#)



SAFE + SECURE

The innovative combination of all four components create a completely leak proof seal



HEAT PROOF + PROTECTED

The wood fibre base both protects the glass when you're out and about, and your hands when removing from the hot microwave



NO MORE SINGLE-USE PLASTIC

The silicone top removes the need for plastic cling-film when microwaving to prevent splatter



VERSATILE

This range is ideal for both hot and cold foods, and the three sizes make it easy to bring breakfast, lunch and everything in between



RECYCLABLE MATERIALS

BPA-free, Borosilicate glass, silicone, polypropylene 304/18-8 stainless steel, with sustainable wood fibre

GLASS LUNCH BOWL



Almond
GR-LB-L014



Slate
GR-LB-L015



750ml
25oz

SIZE	VOLUME + WEIGHT
D14.5 x H8 cm D5.7 x H3.2 in	750 ml 25 fl oz 440 g 15.5 oz

Stainless steel screw tight lid

BPA-free silicone leak proof seal

Microwave-safe + heatproof base with wood fibre

Lightweight glass which is microwave + oven-safe

Non-slip silicone foot





GLASS LUNCH POT - LARGE



600ml
20oz

GR-LB-M015

SIZE	VOLUME + WEIGHT
D12 x H9.5 cm D4.7 x H3.7 in	600 ml 20 fl oz 380 g 13.5 oz

GLASS LUNCH POT



450ml
15oz

GR-LB-S015

SIZE	VOLUME + WEIGHT
D9.5 x H11 cm D3.7 x H4.3 in	450 ml 15 fl oz 320 g 11 oz



450ml
15oz

600ml
20oz

750ml
25oz

THERMO POT

Vacuum insulated and 100% leak proof, the Thermo Pot makes it easy to bring hot (or cold) meals with you on your commute, to the park or on the trail. The natural cork lid is water-repellent, and has thumb grooves to give you extra grip when opening on-the-go.

WATCH VIDEO 



SEALED + SECURE

The screw top silicone seal + natural cork lid is 100% leak proof and airtight



STAYS HOT

Soups, stews or just a really big coffee, the Thermo Pot keeps them hot for up to 6 hours



STAYS COLD

Smoothies, salads or even ice for your drinks, it'll keep them cold for 8 hours



RECYCLABLE MATERIALS

BPA-free, 304/18-8 stainless steel, polypropylene, silicone, natural cork, nylon



BAM-TPB015

SIZE	VOLUME + WEIGHT
D10.5 x H16cm L6.3 x D4.15 in	550 ml 18.5 fl oz 515 g 18.1 oz



black+blum

FOOD FLASK

A slightly smaller version of our Thermo Pot but just as mighty with a steel lid, the Food Flask is also double-walled and vacuum insulated to keep contents hot or cold for hours. The wood fibre/PP spoon neatly hugs the body for compact carrying and makes it easy to eat lunch on-the-go.

WATCH VIDEO 



SEALED + SECURE

The screw top silicone seal + stainless steel lid is 100% leak proof and airtight



STAYS HOT

Soups, stews or just a really big coffee, the Food Flask keeps things hot for up to 6 hours



STAYS COLD

Smoothies, salads or even ice for your drinks, it'll keep it cold for 8 hours



RECYCLABLE MATERIALS

BPA-free, 304/18-8 stainless steel, silicone, nylon



NEW - Black
BAM-FFB-S018



Olive
BAM-FFB-S010



Ocean
BAM-FFB-S005



Orange
BAM-FFB-S003



Double-walled vacuum insulation

Full steel plate means no plastic contact with food

SIZE	VOLUME + WEIGHT
D8.7 x H15.5 cm D3.1 x H6.1 in	400 ml 13.5 fl oz 412 g 14.5 oz



black+blum

DRINKWARE

Our water bottles and travel tumblers are at home with you in the wild, whether it's the morning commute or the mountain trail. Made from steel, glass or high-quality plastic they come in a range of sizes and weights to suit whatever you need them for. Reliable, leak proof and built to last, they're ready to go when you are.



INSULATED WATER BOTTLES

Minimalist design and no-fuss functionality, our Insulated Water Bottles do exactly what you need them to. Keeps drinks cold for up to 24hrs or hot for up to 12hrs, and the vegan leather strap means no missing lids on the road.

WATCH VIDEO 



SAFE + SECURE

100% leak proof and will never spill a drop



NO MISSING LID

Held securely in place by a steel ring and vegan leather strap, the lid is going nowhere without you



STAYS COLD

Vacuum insulated to keep drinks ice cold for 24hrs



STAYS HOT

Ideal to bring coffee and tea to keep the team fueled for the whole day, it stays hot for 12hrs



RECYCLABLE MATERIALS

BPA-free, 304/18-8 stainless steel, polypropylene, vegan leather, silicone

INSULATED BOTTLE



NEW - Black
BAM-IWBB-S018



Olive
BAM-IWBB-S010



Ocean
BAM-IWBB-S005



Orange
BAM-IWBB-S003



INSULATED BOTTLE LARGE



Olive
BAM-IWBB-L010



Ocean
BAM-IWBB-L005



Orange
BAM-IWBB-L003

SIZE	VOLUME + WEIGHT
D7.3 x H23 cm D2.8 x H9 in	500 ml 17 fl oz 280 g 9.8 lbs

SIZE	VOLUME + WEIGHT
D7.7 x H28.5 cm D3 x H11 in	750 ml 25 fl oz 384 g 13.5 oz



500ml
17oz

750ml
25oz

black+blum

black+blum

STEEL BOTTLE

We've gone back to basics with our single-walled Steel Bottle. It's simple yet effective design, includes a wood fibre/PP leak proof lid with a strong steel carry-loop. Reliable and compact, it's ideal for when you want to keep things ultra lightweight.

WATCH VIDEO 



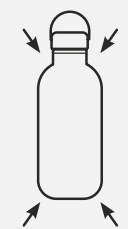
SAFE + SECURE

100% leak proof and will never spill a drop



LIGHTWEIGHT + DURABLE

The single-walled stainless steel is thin but tough, which means it's lighter and easy to transport



COMPACT

The single wall structure makes it extremely compact when compared to double wall alternatives



RECYCLABLE MATERIALS

BPA-free, 304/18-8 stainless steel, polypropylene with wood fibre, silicone



Olive
BAM-WBB-S010



Ocean
BAM-WBB-S005



SIZE	VOLUME + WEIGHT
D7.5 x H20 cm D2.95 x H7.9 in	600 ml 20 fl oz 165 g 5.8 oz



600ml

165g

20cm x 7.5cm

500ml

380g

26cm x 7cm

← Compact size/weight when compared with standard double-walled vacuum bottle

Steel capped lid ensures plastic-free liquid contact



black+blum

EXPLORER BOTTLES

It's all in the name, these bottles were made for adventures. We wanted to create the ultimate design, built to cope with the toughest environments.

WATCH VIDEO 



SAFE + SECURE

100% leak proof and will never spill a drop



REINFORCED STRUCTURE

Vertical ribs on body wall make it stronger and easier to grip



STAYS COLD

Vacuum insulated to keep drinks ice cold for 24hrs



STAYS HOT

Ideal to bring coffee and tea to keep the team fueled for the whole day, it stays hot for 12hrs



RECYCLABLE MATERIALS

BPA-free, 304/18-8 stainless steel, silicone, nylon

EXPLORER BOTTLE LARGE



SIZE	VOLUME + WEIGHT
D8.6 x H23.5 cm D3.4 x H9.2 in	850 ml 29 fl oz 390 g 13.7 oz

EXPLORER BOTTLE



SIZE	VOLUME + WEIGHT
D8.6 x H19 cm D3.4 x H7.5 in	650 ml 22 fl oz 330 g 11.6 oz

650ml
22oz



800ml
29oz



EXPLORER FLASK DUO

The latest addition to our Explorer range is a rugged insulated flask, made for two to enjoy. It has two full steel double-wall cups that securely screw on the top and base and will keep your drinks piping hot or ice cold for 24 hours. The thick nylon strap handle makes it easy to hold on the move or when pouring and the stopper has a completely plastic free contact. The flask and cups are all dishwasher safe for easy cleaning.



SAFE + SECURE

100% leak proof and will never spill a drop



2 STEEL CUPS

Two double wall steel cups that screw on the top and bottom



REINFORCED STRUCTURE

Vertical ribs on body wall make it stronger and easier to grip



STAYS COLD

Vacuum insulated to keep drinks ice cold for 24hrs



STAYS HOT

Ideal to bring coffee and tea to keep the team fuelled for the whole day, it stays hot for 24hrs



RECYCLABLE MATERIALS

BPA-free, 304/18-8 stainless steel, silicone, nylon

NEW



BAM-EF001

SIZE	VOLUME + WEIGHT
D9.7 x H25.8 cm D3.8 x H10.2 in	1 L 34 fl oz 745 g 26.3 oz



GLASS WATER BOTTLE

We wanted to create a minimal design that felt sturdy and authentic, allowing you to enjoy the simplicity that comes with drinking from glass. The thread on the inside of the neck means it has a smooth edge surface, making it easier, and more enjoyable to drink from. The 100% leak proof lid features high-quality stainless steel inside, ensuring no plastic contact with water.

WATCH VIDEO 



SAFE + SECURE

100% leak proof and will never spill a drop



BRIGHT + PROTECTED

The silicone sleeve is available in 7 colours and protects the glass, and also gives your hand extra grip



TASTE-NEUTRAL

The durable borosilicate bottle is tougher than normal glass and completely flavour-neutral, leaving your drink tasting as it should



RECYCLABLE MATERIALS

BPA-free, Hand-blown borosilicate glass, 304/18-8 stainless steel, nylon, polypropylene, silicone (Almond sleeve is TPE with sustainable wood fibre)



Olive
GR-WB-M010



Ocean
GR-WB-M005



Slate
GR-WB-M015



Orange
GR-WB-M003



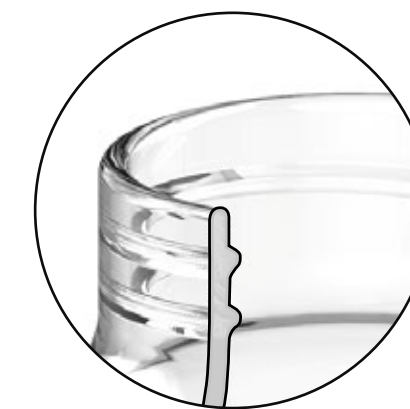
Coral
GR-WB-M011



Burgundy
GR-WB-M004



Almond
GR-WB-M014



Inside thread gives a better drinking experience

Steel lid is strong, leak proof, and taste-neutral



Nylon paracord carry loop

SIZE	VOLUME + WEIGHT
D6.5 x H23.5 cm D2.6 x H9.3 in	600 ml 20 fl oz 340 g 12 oz



INSULATED TRAVEL TUMBLER

Made from high-quality stainless steel, it works for whatever you're brewing. Coffee, beer, cocktails or tea, it will keep drinks hot for up to 5 hours, or cold for 8. The lid is 100% leak proof and opens with one hand - ideal for multi-tasking on the move.



INNOVATIVE LID LOCK

The first of its kind, our 100% leak proof lid lock creates a vacuum seal and won't spill a drop



LIKE DRINKING FROM A MUG

Unlike other steel tumblers, it doesn't come with a complicated pour system, helping you not to burn yourself when drinking



STAYS COLD

Smoothies, juice, beers and cocktails - they'll stay icy cold for 8 hours



STAYS HOT

Coffee, tea, mulled wine and hot toddies - it keeps things steamy for up to 5 hours



ONE HAND OPENING

Unlock in motion with our easy-open lid - there's no need to stop



RECYCLABLE MATERIALS

BPA-free, 304/18-8 stainless steel, Tritan™, silicone, nylon



Olive
BAM-TT010



Ocean
BAM-TT005



Orange
BAM-TT003



SIZE	VOLUME + WEIGHT
H 20.7cm x D 9.4cm H 8.15 x D 3.7 in	600 ml 20 fl oz 435 g 15.3 oz



INSULATED TRAVEL CUP

A slightly smaller version of our tumbler, but made with the same high-quality stainless steel, it will keep your drinks hot or cold. The lid is 100% leak proof, lockable and easy to disassemble for cleaning. It's ideal to take your brew with you, wherever you want to go.

WATCH VIDEO 



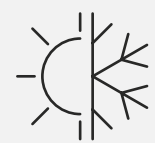
INNOVATIVE LID LOCK

The unique design is 100% leak proof and lockable so you won't spill a drop



LIKE DRINKING FROM A MUG

Unlike other travel cups, it doesn't come with a complicated pour system, helping you not to burn yourself when drinking



TEMPERATURE STEADY

Double-walled insulation means your drinks will stay hot or cold for hours



ONE HAND OPENING

Unlock in motion with our easy-open lid - there's no need to stop

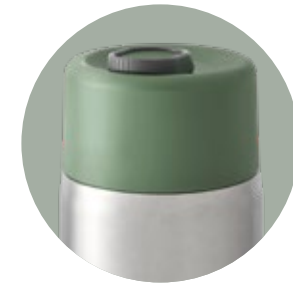


RECYCLABLE MATERIALS

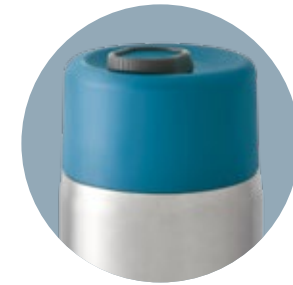
BPA-free, 304/18-8 stainless steel, silicone, polypropylene, nylon, POK, POM



NEW - Black
TC-SS018



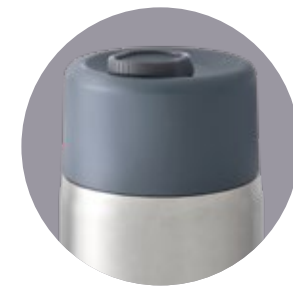
Olive
TC-SS010




Ocean
TC-SS005



Orange
TC-SS003



Slate
TC-SS015

 100% leak proof lid lock design



Dishwasher-safe lid easily dismantles for thorough cleaning



Stainless steel insulated cup keeps drinks hot or cold

SIZE	VOLUME + WEIGHT
D8.6 x H23.5 cm D3.4 x H9.2 in	340 ml 12 fl oz 280 g 9.9 oz



340ml
12oz

GLASS TRAVEL CUP

Crafted from lightweight borosilicate glass, this design will give you a completely taste-neutral experience for either your favourite home brew or coffee shop roast. The non-slip silicone sleeve gives protection to the surprisingly tough glass inner, and ensures you don't burn your hands. The lid is 100% leak proof, lockable and easy to dismantle for thorough cleaning.

WATCH VIDEO 



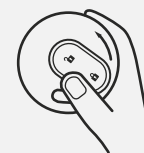
INNOVATIVE LID LOCK

The unique design is 100% leak proof and lockable so you won't spill a drop



LIKE DRINKING FROM A MUG

Unlike other travel cups, it doesn't come with a complicated pour system, helping you not to burn yourself when drinking



ONE HAND OPENING

Unlock in motion with our easy-open lid - there's no need to stop



TASTE-NEUTRAL

The durable borosilicate bottle is tougher than normal glass and completely flavour-neutral, leaving your drink tasting as it should



RECYCLABLE MATERIALS

BPA-free, Hand-blown borosilicate glass, silicone, polypropylene, nylon, POK, POM



Olive
TC-GR010




Ocean
TC-GR005



Coral
TC-GR011



Slate
TC-GR015

 100% leak proof lid lock design



Protective + non-slip sleeve



Dishwasher-safe lid easily dismantles for thorough cleaning

Borosilicate glass cup is completely taste-neutral

SIZE	VOLUME + WEIGHT
D7.2 x H16.5 cm	340 ml 12 fl oz
D2.8 x H6.5 in	355 g 12.5 oz



OUTDOOR DINING

Our new outdoor dining range features three stainless steel sets: cups, plates, and sporks. Each set of four is designed to be both lightweight and durable, and packs down into a handy carry case, so you can take them with you on any adventure. Our cup and plate sets also include a versatile bamboo lid to keep things tidy, and doubles as a chopping board.



STAINLESS STEEL PLATE SET

A set of 4 sturdy high quality steel plates that stack neatly together and are generously wide for all your al fresco feasts. The tough nylon strap holds them tightly together and makes it easy to carry with you on all your adventures. The sustainable bamboo board is perfect for prepping, chopping, or serving, and helps cover any leftovers for easy and clean packing. Each plate is individually marked with a different fruit icon, so you'll know which is yours.

EASY CARRY
The strong nylon strap makes it easy to keep the plates and board together and carry by hand or strap to your backpack

LIGHT BUT STRONG
The high quality 0.4mm thick stainless steel is light but strong

BAMBOO LID
The naturally antibacterial bamboo lid is ideal for prepping, chopping, or serving

PLATE IDENTIFIER
Each plate can is individually marked so you can always tell which is yours

RECYCLABLE MATERIALS
BPA-free , 304/19-8 stainless steel, natural bamboo, nylon

NEW



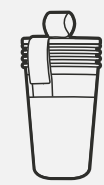
OL-PLATE001

SIZE	WEIGHT
D25.6 x H5.0 cm D10.1 x H2 in	1137 g 40.1 oz



STAINLESS STEEL CUP SET

Made from high quality stainless steel, this cup set stacks neatly together to save on space. Each cup is individually marked with a different fruit so you'll easily be able to spot which one is yours. The bamboo chopping board lid can be used to cut your lemon or lime on-the-go and there's a handy bottle opener on the underside. The tough nylon strap keeps everything together for easy carrying and packing.



EASY CARRY

The strong nylon strap makes it easy to keep the plates and board together and carry by hand or strap to your backpack



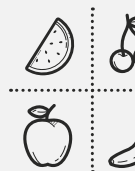
BAMBOO BOARD + BOTTLE OPENER

The bamboo top is a convenient bottle opener, but also doubles as a mini cutting board



LIGHT BUT STRONG

The high quality 0.4mm thick stainless steel is light but strong



CUP IDENTIFIER

Each cup is marked with a different fruit so you'll know which is yours



RECYCLABLE MATERIALS

BPA-free , 304/19-8 stainless steel, natural bamboo, nylon

NEW



Strap keeps everything together

4 individually marked cups

Bamboo board + bottle opener

OL-CUP001

SIZE	VOLUME + WEIGHT
D9.4 x H15.8 cm D3.7 x H6.2 in	4 x 500 ml 4 x 16.9 fl oz 4 x 74 g 4 x 2.6 oz



STAINLESS STEEL SPORK SET

A spoon and fork in one, is commonly known as a 'spork' and is the perfect minimal yet functional cutlery design for camping or picnic adventure. Made from high quality stainless steel, they're lightweight, strong and dishwasher safe. Each one is individually marked with a different fruit, so you'll easily spot yours. They stack neatly together to save on space and come in an 'easy-wipe-clean' case made from recycled PET bottles.

TOUGH + LIGHTWEIGHT



The high quality stainless steel is super strong but lightweight for easy carrying on-the-go

EASY CLEAN CASE



The case makes it easy to take the spork set with you, and opens up fully for easy cleaning

SPORK IDENTIFIER



Each spork is marked with a different fruit so you'll know which is yours

DISHWASHER-SAFE



As easy to clean as home kitchen cutlery

RECYCLABLE MATERIALS



304/19-8 stainless steel, recycled PET

NEW



Easy-clean case (made from recycled PET)

OL-SP001

SIZE	WEIGHT
W20.5 x D4.5 x H2.5 cm W8.1 x D1.8 x H1	164 g 5.8 oz

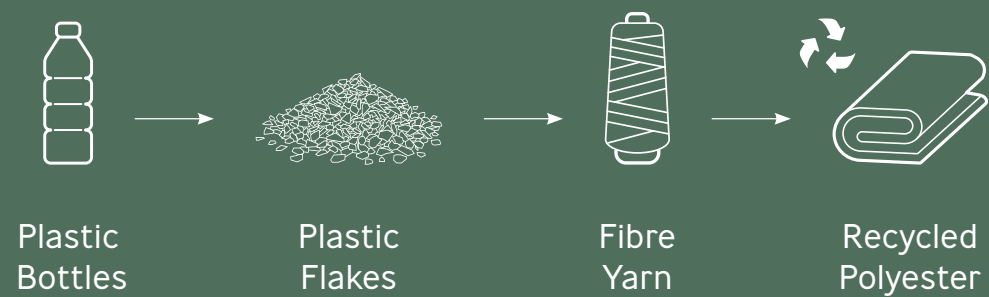


BAGS + COOLERS

Our range of bags and coolers are ready for any adventure. Made from recycled PET plastic they are tough, hard wearing and water repellent. Whether you're going to a festival, out camping or just on your daily commute, there's a bag for every purpose.

HOW OUR BAGS ARE MADE


All of our bags are made using recycled PET plastic which is a lightweight and durable material made by recycling plastics such as water bottles. This helps to reduce the environmental impact of each bag.




INSULATED BOTTLE BAG

Whether on a mountain hike, a work commute or at a festival, you'll want to keep a bottle with you but don't always have a backpack or hands free to carry it. Our bottle bag is designed to keep you moving and hydrated, with an adjustable closing it can securely hold a whole range of bottles, tumblers, cans and cups. The reinforced strap is fully adjustable for wearing on a shoulder or cross body. The insulated lining will even help keep your drink cool and has a secure pocket that is perfect for your phone or keys.

 **WATER-REPELLENT INTERIOR**
Easy to wipe clean and leak proof

 **KEEPS CONTENTS COOL**
The insulative lining will maintain internal temperature and keep things cool

 **ADJUSTABLE DRAWSTRING**
Secures a variety of bottles in place

 **SUSTAINABLE MATERIALS**
Recycled PET, PEVA (BPA-free & food safe inner lining), polycotton, PU leather

NEW



Moss
LIB019



Slate
LIB021



Black
LIB018



Clay
LIB020



Holds a wide range of bottles



Secure side pocket ideal for your phone

Adjustable shoulder strap

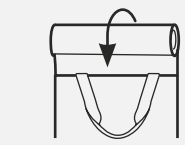
SIZE	WEIGHT
D11.5 x W10.5 x H20 cm D4.5 x W4.1 x H7.8 in	113 g 4 oz



black+blum
LONDON

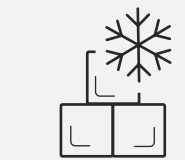
INSULATED COOLER BAG

The perfect soft and lightweight insulated cooler for carrying your food and drinks with you. Whether you are taking it on a camping trip, a picnic, or a festival it'll keep your drinks cold and will be easy to carry thanks to the wide padded shoulder strap. Each bag includes a bottle opener buckle and fits 30 cans + ice thanks to its 25-litre capacity. The bag is also made from 26 recycled plastic bottles and is fully sealed, so you won't ever spill a drop.



SEALED + SECURE ROLL TOP

Inspired by dry-bags, the roll top and welded lining construction is 100% leak proof



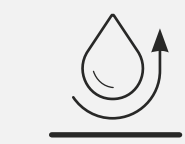
KEEPS ICE FOR 36 HOURS

Our insulated lining will keep your ice frozen for 36 hours



FITS 30 CANS (incl. 1/3 for ice)

Fits all types of containers and will even keep wine bottles upright



WATER REPELLENT BODY + BASE

The water repellent container will keep rain and condensation out, and prevent any leaks



SUSTAINABLE MATERIALS

Recycled PET, TPU coated RPET, PEVA (BPA-free and food safe inner lining), polycotton, PU leather, zinc alloy

NEW



Moss
LIC019



Slate
LIC021



Padded handles for comfortable carrying



Roll top closure



Hook doubles up as bottle opener

SIZE	VOLUME + WEIGHT
W38.5 x H40 x D27 cm	25 L 845 fl oz
W15 x H15.7 x D10.6 in	1213 g 42.7 oz



INSULATED LUNCH BAG

With a generous capacity and made from recycled plastic bottles, this lunch bag is all you need to carry your breakfast, lunch and snacks for the day. The sealed insulated construction keeps the contents cool, it's also 100% leak proof, water-repellent and easy to wipe clean. The roll top and clip make it easy to carry, ideal to strap to your bike or backpack.



SEALED + SECURE

Inspired by dry-bags, the roll top and welded lining construction is 100% leak proof



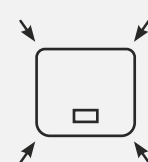
WATER-REPELLENT INNER

Easy to wipe clean and food-safe



KEEPS CONTENTS COOL

The insulative lining will maintain internal temperature and keep things cool



COMPACT STORAGE

Folds down flat when empty to save on space



SUSTAINABLE MATERIALS

Recycled PET, PEVA (BPA-free & food safe inner lining), iron, polypropylene

NEW



Moss
LBB019



Slate
LBB021



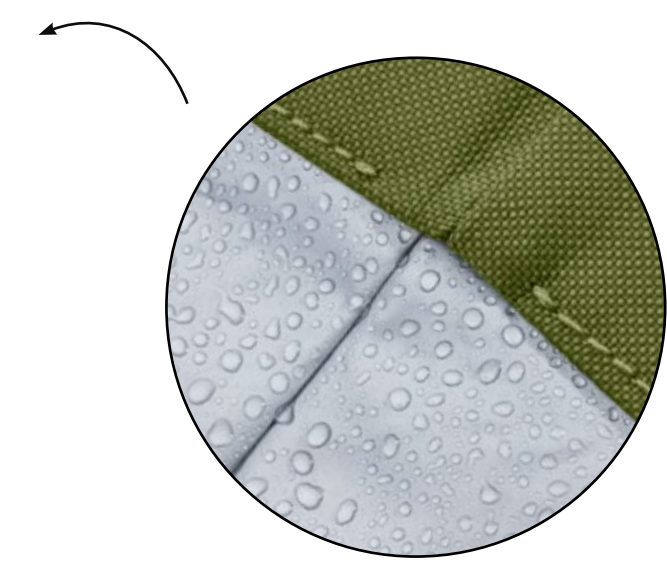
Black
LBB018



Clay
LBB020



Hook closure



Water-repellent
easy wipe lining


SIZE	VOLUME + WEIGHT
W20 x H31 x D15 cm W7.9 x H12.2 x D5.9 in	6.7 L 235 fl oz 164 g 5.7 oz



INSULATED TOTE BAG

We've taken our already popular design and made it even better and introduced new colour options. The new tote has thicker insulation for keeping the contents even cooler and this also makes it more stable so it now stands up on its own (even when empty), which is so useful when you're loading it when out and about. The ideal tote for carrying breakfast or lunch, food market shop, park picnic or even gym kit.

 **WATER-REPELLENT INNER**
Easy to wipe clean and food-safe

 **KEEPS CONTENTS COOL**
The insulative lining will maintain internal temperature and keep things cool

 **SEPARATE COMPARTMENTS**
Split-sectioned to separate cold/wet contents

 **SUSTAINABLE MATERIALS**
Recycled PET, PEVA (BPA-free & food safe inner lining), polycotton, PU leather

NEW



Moss
LIT019



Slate
LIT021



Black
LIT018



Clay
LIT020



Secure zip opening



Hand + shoulder carry straps

Base allows bag to stay upright for easy loading

SIZE	VOLUME + WEIGHT
W40 x H42 x D14 cm W15.7 x H16.5 x D5.5 in	16 L 541 fl oz 450 g 16 oz



CHARCOAL FILTRATION

Activated charcoal has been used for centuries to remove toxins, treat digestive ailments, and filter drinking water. It not only makes tap water taste delicious, but it completely eliminates the need for bottled water, and the single-use plastic that comes with it. What began with one bottle has quickly expanded to an entire range, with charcoal filtration being one of our best-selling collections.

We source our charcoal from the skilled artisan makers of Laos. They follow strict conservation rules to protect the surrounding forests and minimise the farming effect on the local environment.



BINCHOTAN CHARCOAL HISTORY

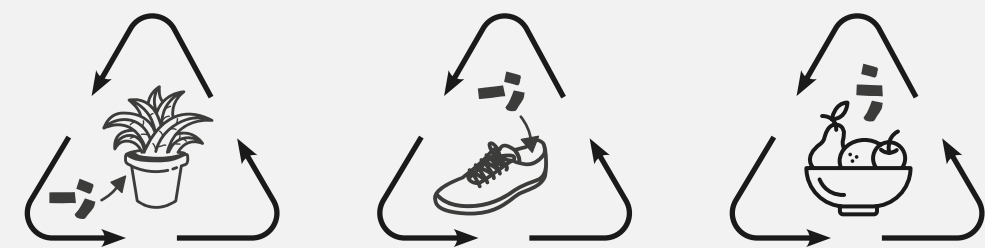
It is believed that a form of Binchotan charcoal (sometimes referred to as 'white charcoal') was introduced to Japan by a monk and scholar called Kukai 1,200 years ago. However, it wasn't until the Edo Period (17th century) that a man called Binchuya Chozaemon made it popular.

HOW IT WORKS?

This type of filtering works using a process similar to reverse osmosis. Binchotan charcoal has an incredibly porous surface with tiny cavities orientated in many directions - just 1 gram has a surface area of 500m² (the size two tennis courts). The positive ions of contaminants in the water (like chlorine) are attracted to the negative surface of the carbon where they are held. In reverse, the charcoal releases its natural minerals such as calcium, potassium and magnesium back into the water, which softens it and enhances the taste.

CIRCULAR ECONOMY

One of the reasons we love working with Binchotan charcoal is because it can be reused all around the house and garden once it's finished as a water filter.

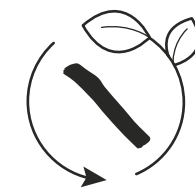


[Read](#) the blog to find out more about this amazing material.



+ ADDS MINERALS
Like potassium, iron + magnesium

- REMOVES CONTAMINANTS
Like chlorine



ZERO-WASTE

Can be reused all around the house + garden



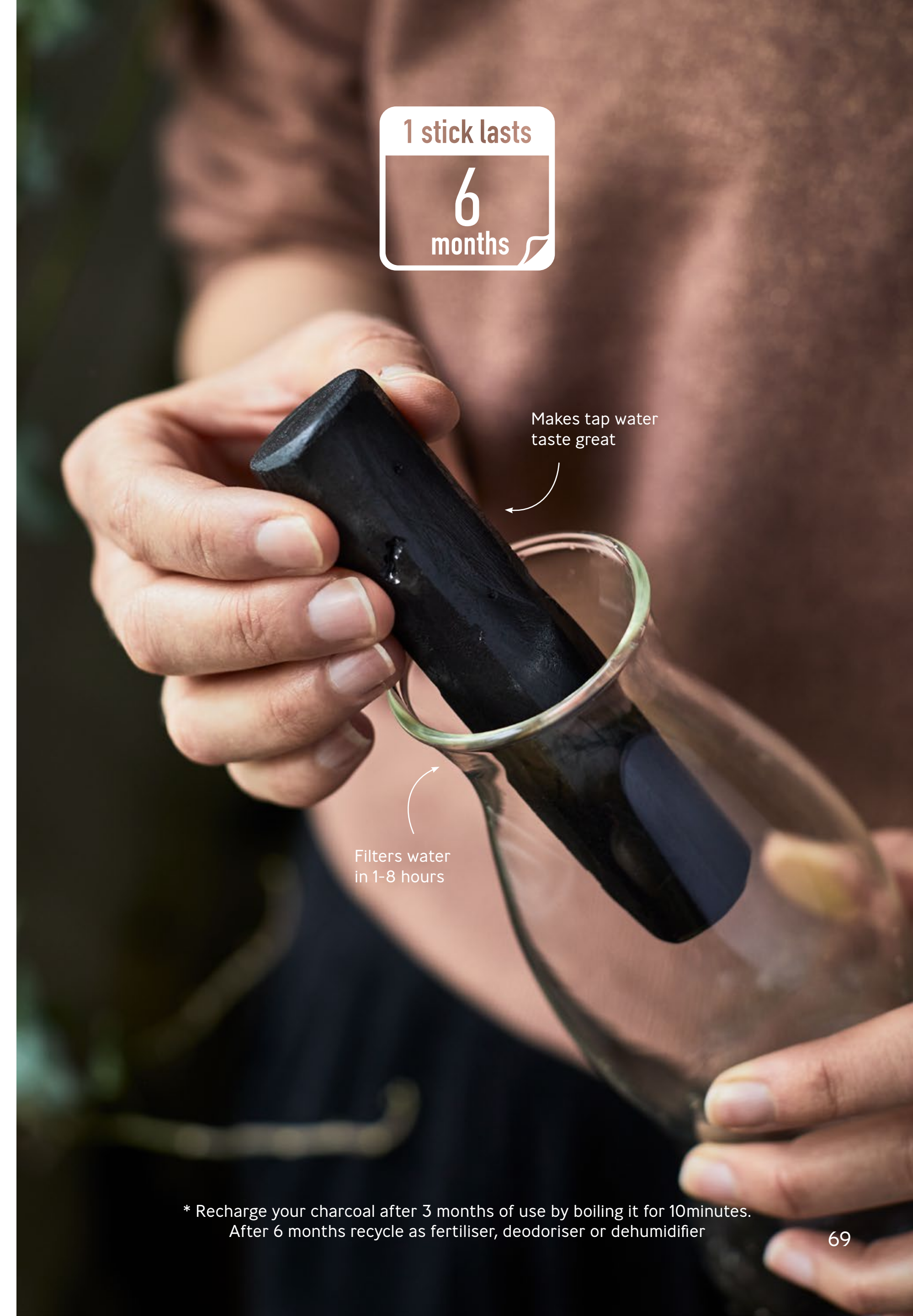
VERSATILE

Can be used in any bottle or jug



PLASTIC-FREE

No hard plastic casing like other water filters



1 stick lasts
6
months

Makes tap water taste great

Filters water in 1-8 hours

* Recharge your charcoal after 3 months of use by boiling it for 10minutes. After 6 months recycle as fertiliser, deodoriser or dehumidifier

CHARCOAL WATER FILTER

Our charcoal sticks are available in either single or a 4-pack. Each stick lasts 6 months and comes pressure washed and preserved in a vacuum-sealed recyclable plastic sleeve for immediate use.

Counter POS available (see p84).

WATCH VIDEO 

SUSTAINABLY SOURCED



Our producers only farm from local renewable forests, without removing the roots to promote re-growth and protect soil biodiversity

RECYCABLE



All packaging is 100% recyclable. The charcoal sticks can be reused all around the house + garden

MATERIALS



100% natural wood

ACTIVE CHARCOAL SINGLE FILTER



Fits in all our bottles

EGS001-1B

SIZE	FILTER LONGEVITY
D2.5 x L11.8 cm D1 x L5 in	Last 6 months, re-boil after 3 months

*NB: as charcoal is natural wood, each stick may vary in size, max dimensions shown above.

ACTIVE CHARCOAL 4-PACK FILTERS



EGS004

SIZE	FILTER LONGEVITY
W9.5 x L16.5 x H7 cm W3.8 x L6.5 x H2.8 in	Each filter 6 months, re-boil after 3 months



BULK CHARCOAL PIECES

As more and more people are looking to live plastic-free and zero-waste, our 5kg bulk pack of charcoal allows consumers to buy by weight, and bring their own packaging. The shelf-ready box allows you to select the amount you need, and also illustrates the secondary uses of charcoal to extend its life, such as a deodoriser or dehumidifier.

This type of filtration works best in larger vessels, like water jugs and canisters. It also needs to be boiled for 10 minutes before first usage.



SUSTAINABLY SOURCED

Our producers only farm from local renewable forests, without removing the roots to promote re-growth and protect soil biodiversity



RECYCABLE

All packaging is 100% recyclable. The charcoal sticks can be reused all around the house + garden



AVAILABLE TO BUY BY WEIGHT

Customers can choose how much they want, and bring their own packaging



MATERIALS

100% natural wood



Display ready packaging

5KG
176.4oz

EGS5KG

SIZE	FILTER LONGEVITY
W29.5 x L29.5 x H20.5 cm W11.6 x L11.6 x H8 in	Each pieces 6 months, re-boil after 3 months

CHARCOAL WATER FILTER & COIL

Turn any bottle into a filtered bottle with our universal charcoal coil. It comes with an active charcoal stick giving you 6 months of clean, clear and delicious water. No rattling and no scratches, it's locked into place with a spring coil. Completely taste-neutral and easy to use.

Counter POS available (see p84).

WATCH VIDEO 

SUSTAINABLY SOURCED



Our producers only farm from local renewable forests, without removing the roots to promote re-growth and protect soil biodiversity

RECYCLABLE



All packaging is 100% recyclable. The charcoal sticks can be reused all around the house + garden

FITS ANY BOTTLE

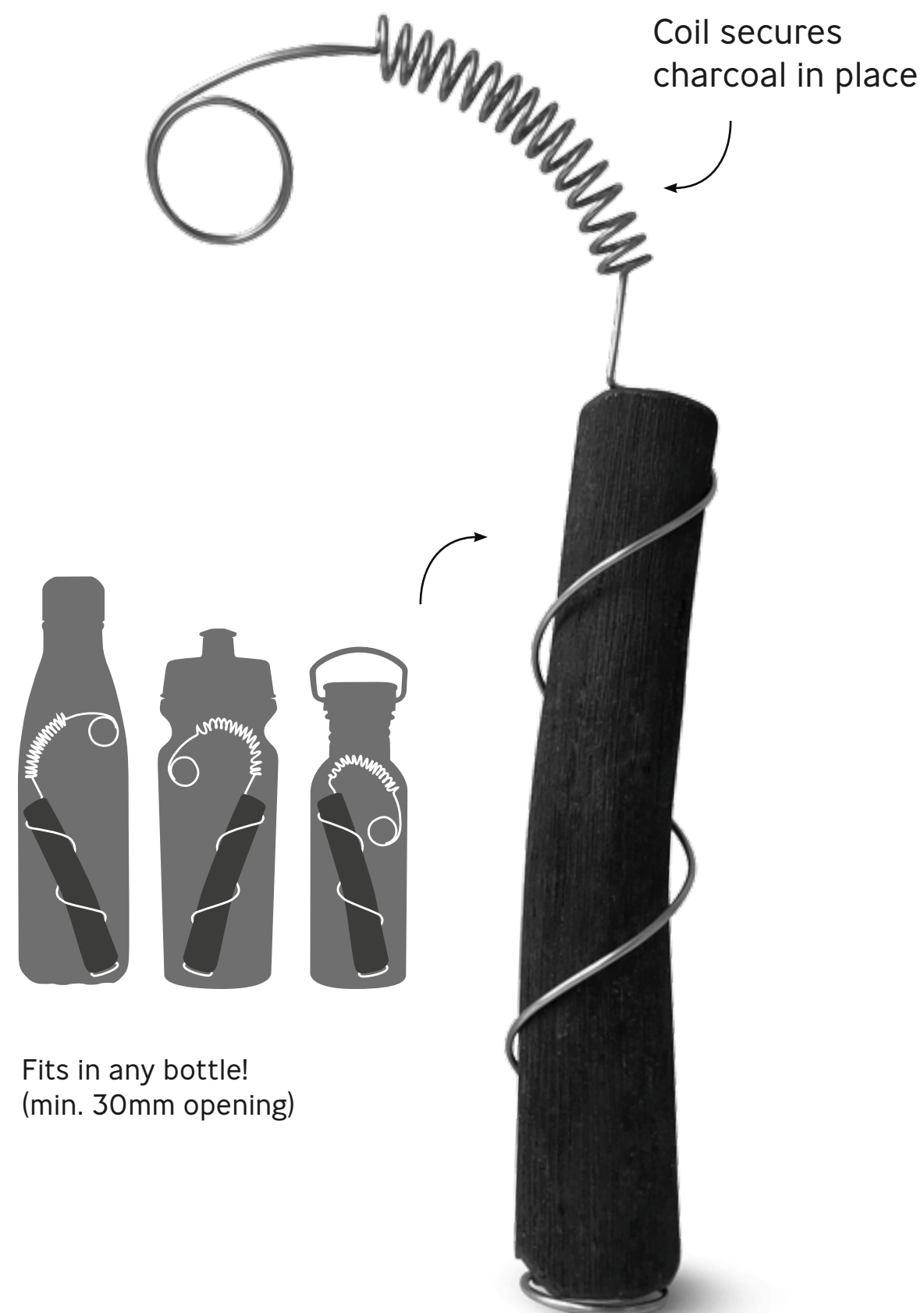


The high-quality steel spring coil locks the charcoal into place in any reusable bottle

MATERIALS



304/18-8 stainless steel, 100% natural wood



EGS001-1C

SIZE	FILTER LONGEVITY
D2.8 x L11.8 cm* D1.1 x 4.6 in	Last 6 months, re-boil after 3 months

*NB: as charcoal is natural wood, each stick may vary in size, max dimensions shown above.



EAU GOOD GLASS

Made from hand-blown durable borosilicate glass, this bottle includes an active charcoal water filter and coil, and is protected by a recycled polyester insulating sleeve. The lid is made from a natural wood fibre polypropylene mix and is 100% leak proof. Never has water looked so clear or tasted so clean.



STRONG LID + LOOP

100% leak proof with a convenient steel loop for easy carrying



Olive
EGO-EGG010



Ocean
EGO-EGG005



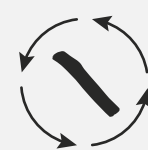
SUSTAINABLY SOURCED

Our charcoal producers only farm from local renewable forests, without removing the roots to promote re-growth and protect soil biodiversity.



TASTE-NEUTRAL

The durable borosilicate bottle is tougher than normal glass and completely flavour-neutral, leaving your water tasting clean and clear



EASY TO REFILL

Paired perfectly with our Active Charcoal 4-pack, it's easy to replace the filter



RECYCLABLE MATERIALS

Hand-blown borosilicate glass, polypropylene with wood fibre, recycled polyester, silicone, polypropylene, 304/18-8 stainless steel



SIZE	VOLUME + WEIGHT
D8.2 x H23.6 cm D3.2 x H9.3 in	650 ml 22 fl oz 315 g 11 oz



ZERO WASTE

BASIC INGREDIENTS

The Zero Waste solution to basic ingredients is simple:

- **Non-perishables** (dry goods) Buy whole ingredients in bulk, as the packaging is mostly thick paper bags, which are composted. When milk and cream come directly from the dairy, there is an opportunity to specify the packaging. If you don't want to make your own butter, find yogurt, cheese and so on).
- **Perishable ingredients** Buy whole ingredients directly from their origin, without packaging. If you don't want to make your own butter, find yogurt, cheese and so on).

Buy whole ingredients in bulk, as the packaging is mostly thick paper bags, which are composted. When milk and cream come directly from the dairy, there is an opportunity to specify the packaging. If you don't want to make your own butter, find yogurt, cheese and so on).

Buy whole ingredients in bulk, as the packaging is mostly thick paper bags, which are composted. When milk and cream come directly from the dairy, there is an opportunity to specify the packaging. If you don't want to make your own butter, find yogurt, cheese and so on).

Buy whole ingredients in bulk, as the packaging is mostly thick paper bags, which are composted. When milk and cream come directly from the dairy, there is an opportunity to specify the packaging. If you don't want to make your own butter, find yogurt, cheese and so on).

Buy whole ingredients in bulk, as the packaging is mostly thick paper bags, which are composted. When milk and cream come directly from the dairy, there is an opportunity to specify the packaging. If you don't want to make your own butter, find yogurt, cheese and so on).

Buy whole ingredients in bulk, as the packaging is mostly thick paper bags, which are composted. When milk and cream come directly from the dairy, there is an opportunity to specify the packaging. If you don't want to make your own butter, find yogurt, cheese and so on).

Buy whole ingredients in bulk, as the packaging is mostly thick paper bags, which are composted. When milk and cream come directly from the dairy, there is an opportunity to specify the packaging. If you don't want to make your own butter, find yogurt, cheese and so on).

Buy whole ingredients in bulk, as the packaging is mostly thick paper bags, which are composted. When milk and cream come directly from the dairy, there is an opportunity to specify the packaging. If you don't want to make your own butter, find yogurt, cheese and so on).

Buy whole ingredients in bulk, as the packaging is mostly thick paper bags, which are composted. When milk and cream come directly from the dairy, there is an opportunity to specify the packaging. If you don't want to make your own butter, find yogurt, cheese and so on).

Buy whole ingredients in bulk, as the packaging is mostly thick paper bags, which are composted. When milk and cream come directly from the dairy, there is an opportunity to specify the packaging. If you don't want to make your own butter, find yogurt, cheese and so on).

Buy whole ingredients in bulk, as the packaging is mostly thick paper bags, which are composted. When milk and cream come directly from the dairy, there is an opportunity to specify the packaging. If you don't want to make your own butter, find yogurt, cheese and so on).

Buy whole ingredients in bulk, as the packaging is mostly thick paper bags, which are composted. When milk and cream come directly from the dairy, there is an opportunity to specify the packaging. If you don't want to make your own butter, find yogurt, cheese and so on).

CARAFES

Both our carafes are a beautiful natural, organic shape which is a pleasure to hold and pour from. They are made from lightweight and durable hand-blown glass, and come with our famous active charcoal water filter, giving you 6 months of pure, clear and delicious water.

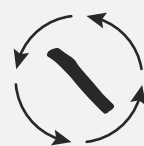
The larger of the two, the Eau Carafe, is perfect for entertaining and has a natural cork stopper with a removable silicone cap to prevent mould. The Personal Carafe is ideal on bedside and kitchen tables, or in the office to keep you hydrated throughout the day - it also comes with a small tumbler and sustainably-sourced cork coaster.

SUSTAINABLY SOURCED



Our charcoal producers only farm from local renewable forests, without removing the roots to promote re-growth and protect soil biodiversity

EASY TO REFILL



Pairing perfectly with our Active Charcoal 4-pack, it's easy to replace the filter

SUPERIOR MATERIALS



The durable borosilicate bottle is more lightweight than normal glass and completely flavour-neutral, leaving your water tasting clean and clear

RECYCLABLE MATERIALS



Hand-blown borosilicate glass, natural cork (silicone - Eau Carafe only)

EAU CARAFE

WATCH VIDEO



Sustainably-sourced cork stopper

EC002

SIZE	VOLUME + WEIGHT
D9.5 x H28 cm D3.7 x H11 in	1.1 L 37 fl oz 380 g 13.5 oz

PERSONAL CARAFE

WATCH VIDEO



Hand-blown drinking glass/stopper

Natural cork coaster

EC003

SIZE	VOLUME + WEIGHT
D10 x H25 cm D4 x H9.8 in	800 ml 27 fl oz 650 g 23 oz



ACCESSORIES

Our accessories have been designed to complement our main product ranges and are simple to add to any purchase. They will heighten any adventure and make it easy to live zero-waste, leaving no trace on your travels.



CUTLERY SET

This stacking knife, fork and spoon set feels at home in your hands, and nests into a hygienic, compact carry case. Made from 18/8 stainless steel, they're tough and are far more effective than plastic or bamboo sets.

We have developed a Counter Display Unit (CDU) as an alternative to the boxed packaging for merchandising in store. Ideal for counter tops near checkout for impulse or add-on purchase.

WATCH VIDEO 



TOUGH + LIGHTWEIGHT

The high quality stainless steel is super strong but lightweight for easy carrying on-the-go



HYGIENIC CARRY CASE

Snaps shut so there's no cross contamination



DISHWASHER-SAFE

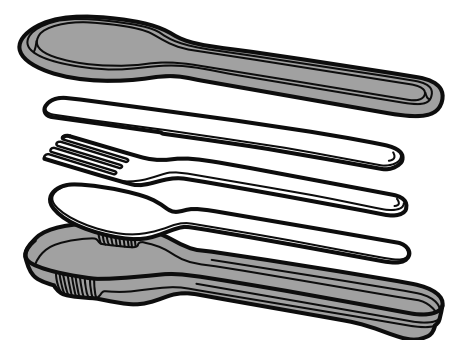
As easy to clean as home kitchen cutlery



SUSTAINABLE MATERIALS

304/18-8 stainless steel, polypropylene

CUTLERY SET + CASE



Spoon, fork and knife nest in the case



BAM-SSC001

SIZE	WEIGHT
L5 x W20 x H2 cm L2 x W7.8 x H0.8 in	127 g 4.5 oz

CUTLERY SET + CASE CDU

Available in sets of 16, individually labeled



BAM-SSC002

SIZE	WEIGHT
L14.5 x W25 x H28 cm W5.7 x D9.8 x H11 in	127 g 4.5 oz



RECIPE BOOK - LET'S DO LUNCH BOX

With over 80 recipes to make mornings and lunchtimes brighter, healthier and more sustainable, 'Let's Do Lunch Box' has been created specifically for our products. It is ideal to help boost average order value and merchandising within store. Including recipes from 4 well-known recipe developers, health, wellness and food influencers including Sara Kiyoko Popowa (@shisideliicious) and Ryan Carter (@livevitae), it's packed with nutritious and delicious meal ideas.



80+ RECIPES

Ideal for breakfast, lunch and everything in between

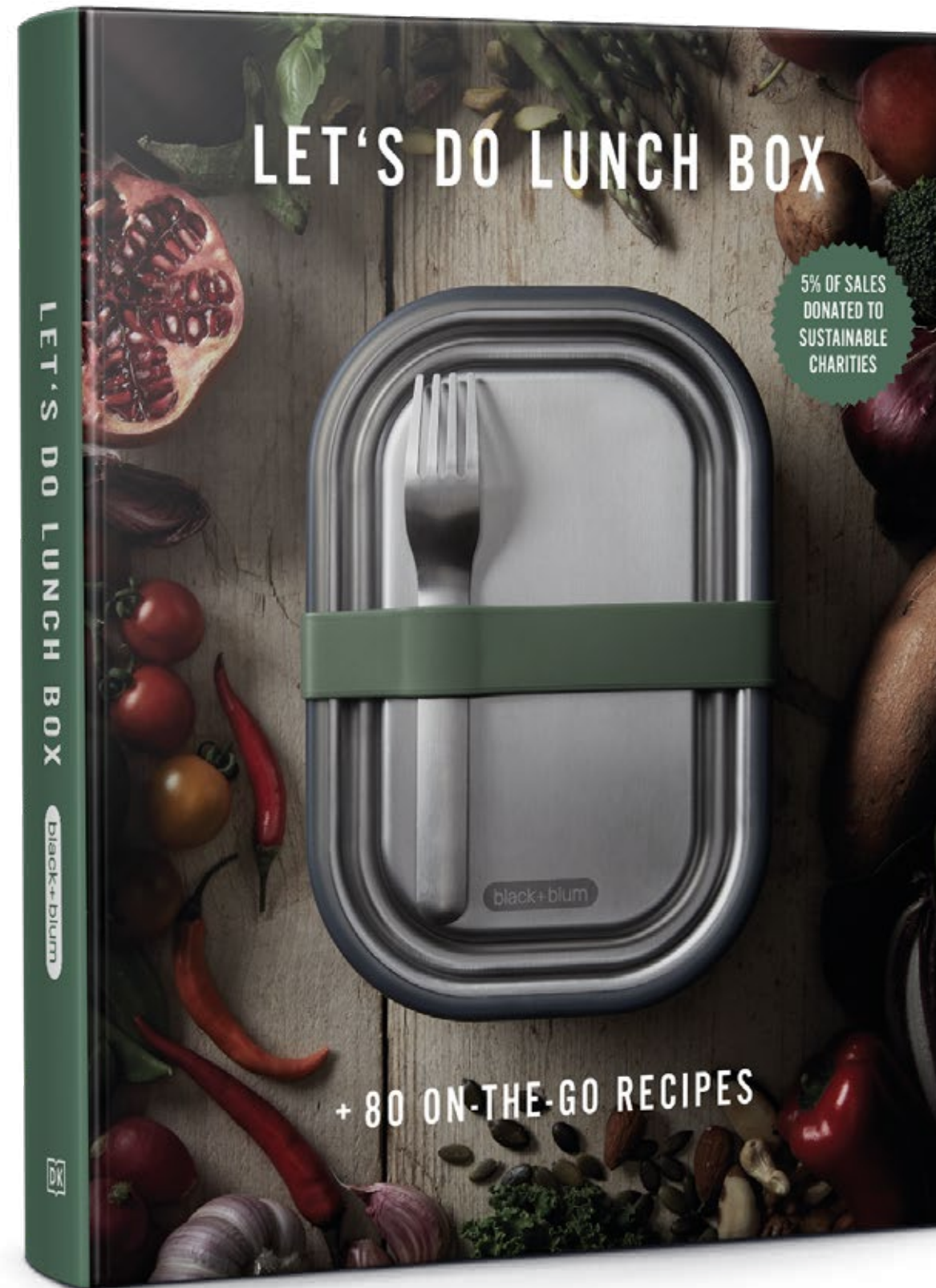


IDEAL FOR UPSELLING

Each recipe recommends a product pairing, making this book the ideal add-on to boost your average-order-value



of sales go to our eco-charity partner, City Harvest



LBR-B001

SIZE	PAGES
W2 x L19.5 x H23.5 cm W0.8 x L7.7 x H9.2 in	191 pages



Delicious and nutritious recipes



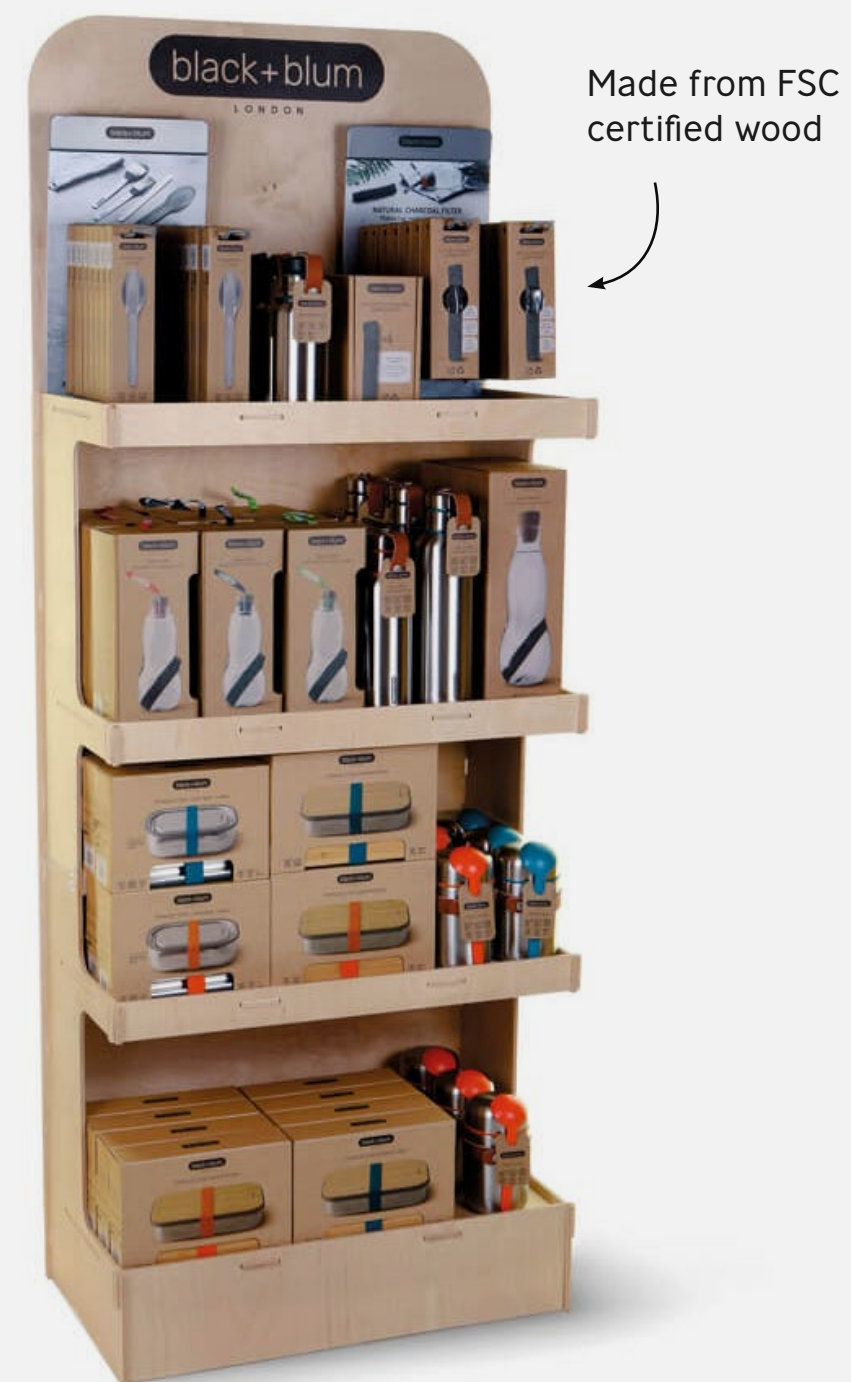
Each recipe includes product recommendations



16 great recipes from food influencers

WOODEN POS

This natural FSC Certified wooden floor-standing POS unit stands out instore, further highlighting the eco-credentials of the brand. The top two shelves are high enough to accommodate the metal POS unit (cutlery). It will arrive flat-packed and is easy to assemble with supplied instructions.



SIZE	PRODUCT CODE
W65 x D36 x H171 cm W25.5 x D14 x H67.3 in	POS-FSDU-S

COUNTER POS STAND

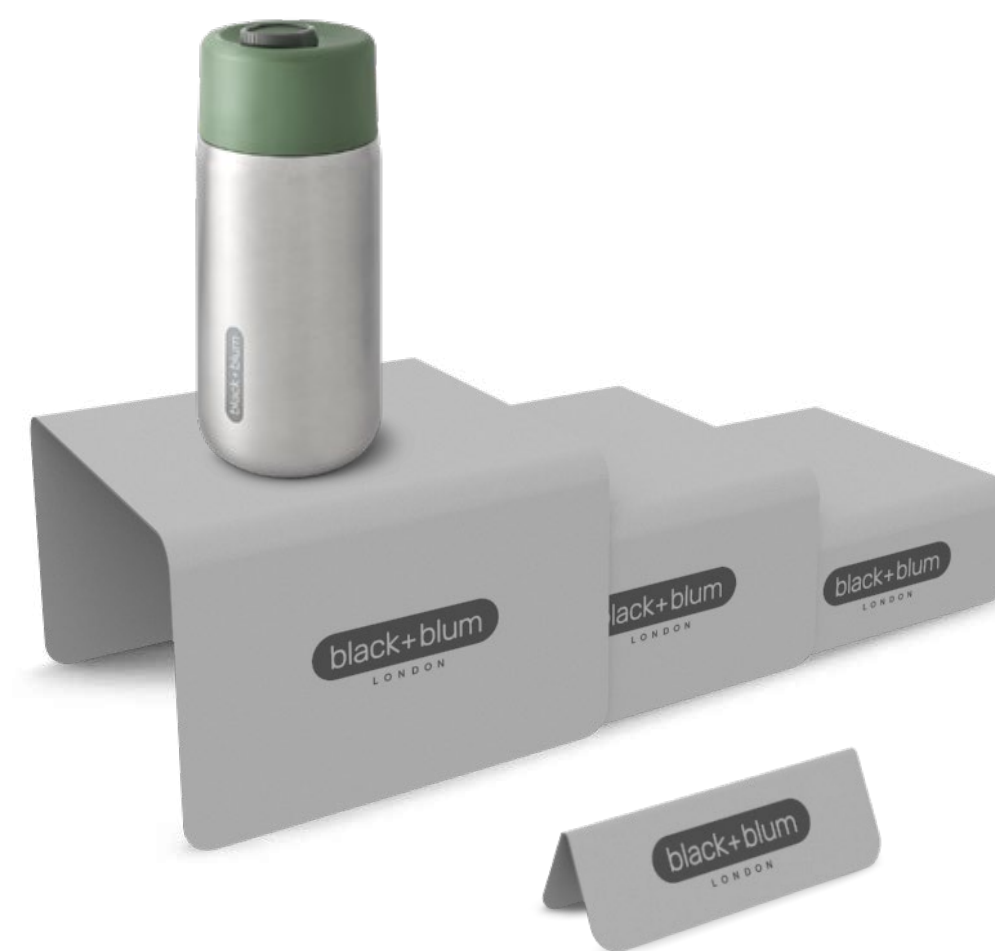
Our simplest POS unit, the euro hook stand, is made of powder-coated steel and assembles with just two screws. It accommodates our individually boxed cutlery set & case, with interchangeable backing cards available in various languages as required. Arrives flat-packed.



SIZE	PRODUCT CODE
W21 x D27 x H36 cm W8.2 x D10.6 x H14.2 in	POS-COUNTERTOP

COUNTER POS STAND

The set of 3 powder-coated steel risers will help elevate and complement any display, and neatly stack together for convenient storage.



SIZES	
POS-RISERS (largest)	POS-PLATE (name plate)
W15 x D15 x H10 cm W5.9 x D5.9 x H3.9 in	W12 x D4 x H4 cm W4.7 x D1.6 x H1.6 in

COUNTER POS STAND

Include lifestyle imagery and informative product descriptions to your display and bring the range to life.



SIZES	
Landscape	Portrait
W21 x H14.8cm W8.26 x H5.8 in	W14.8 x H21cm W5.8 x H8.26 in

CO-BRAND WITH US

Our range of unique and eco-friendly products are the perfect gift or promotional item for your employees and corporate events. From water bottles to lunch boxes, insulated thermoses or even a portable cutlery set - the possibilities are endless.

We have laser-etching and printing suppliers in the UK, Europe and US or, for larger volumes, at our factories. Made from high-quality materials, all our products are built to last and easy to customise. Enquire to create something special and sustainable with your logo.

EXPLORE CO-BRAND OPTIONS

View our brochure below or email us at co-brand@black-blum.com to learn more.

[CO-BRAND BROCHURE](#)



PHOTOGRAPHY + VIDEOS

Explore our wide range of videos, product and lifestyle imagery to help support and promote you both instore and online.

ONLINE ASSETS

All images and videos can be found at

www.black-blumassets.com ↓

SOCIAL CHANNELS

Follow us for product launches, tips, recipes and more.



CONTACT US

Email us at sales@black-blum.com or give us a call +44 (0) 20 7633 0022

black-blum.com

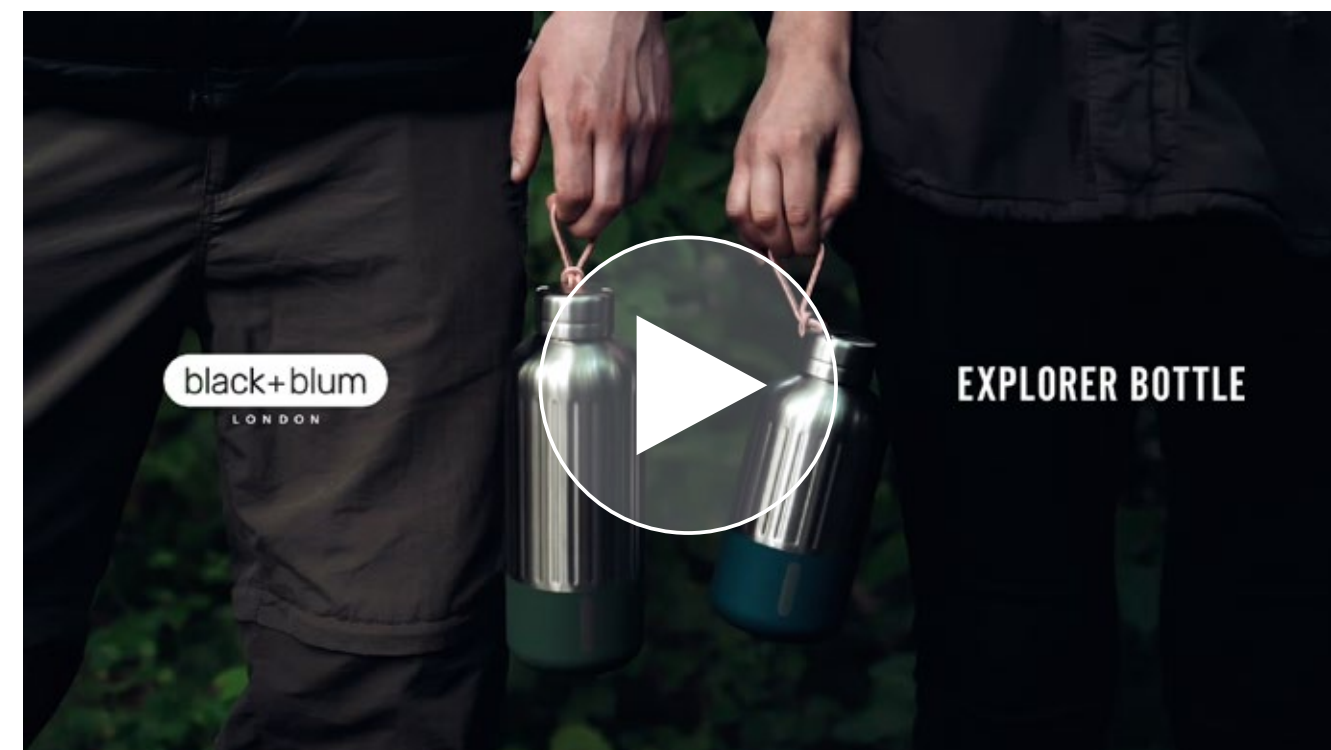
CUT OUT IMAGES

Clean and clear photography with exploded views and product details highlighted



PRODUCT VIDEOS

Individually shot to further explain each product and show how it can be used



LIFESTYLE IMAGES

High-quality photography with a mix of people, food and different environments. Some high resolution available

